

[Home](#) > [Reports and data](#) > [State of the NSW public sector](#) > [State of the NSW Public Sector Report 2022](#) > [Our structure](#)

Our structure

The sector's size and distribution across our state.

On this page

[Headcount and full-time equivalent employees](#)

[Structure of the NSW public sector](#)

[Headcount and contribution to overall employment by NSW region](#)

[Occupations](#)

[Employment types](#)

Over 400,000 employees work in the NSW public sector to deliver a wide range of services to the people of NSW. The sector is divided into 10 operational clusters that coordinate, develop and provide related services and policy. Each cluster oversees the delivery of government services across NSW.

Headcount and full-time equivalent employees



433,890

ongoing, temporary and casual employees



equating to 363,617

full-time equivalent employees

Source: Workforce Profile (2022), census period

The number of full-time equivalent (FTE) employees in the sector increased by 3,427 (or 1.0%) from 2021 to 2022, to support service delivery across the state.

Source: Workforce Profile (2013–22), census period

The number of people employed in the sector increased by 0.6% in 2022. The sector’s growth was outpaced by growth in the number of people employed in NSW overall, which was up 2.8%.

Source: Workforce Profile (2018–22); ABS (2022a)

Structure of the NSW public sector

The GSE Act establishes two main employment groups: the government sector and the Public Service within it. Most government employees are in the government sector.

The public sector is also structured into 10 operational clusters that coordinate related day-to-day public services, each led by a secretary. The term ‘cluster’ is commonly used for administrative purposes; however, clusters are not established by legislation.



Structure of the NSW public sector: text version of diagram



The public sector covers the government sector (under the *Government Sector Employment Act 2013 (NSW)* (GSE Act), which includes six areas: the Teaching Service, Other Crown services[#], the Public Service (including departments, executive agencies related to departments and separate Public Service agencies),

the Police Force, the Transport Service and the Health Service.

Also under the umbrella of the public sector, but outside the government sector, are seven areas: State owned corporations*, Staff of Members of Parliament**, Judicial officers, Staff of the Parliament, the Independent Commission Against Corruption, the Judicial Commission and the Audit Office.

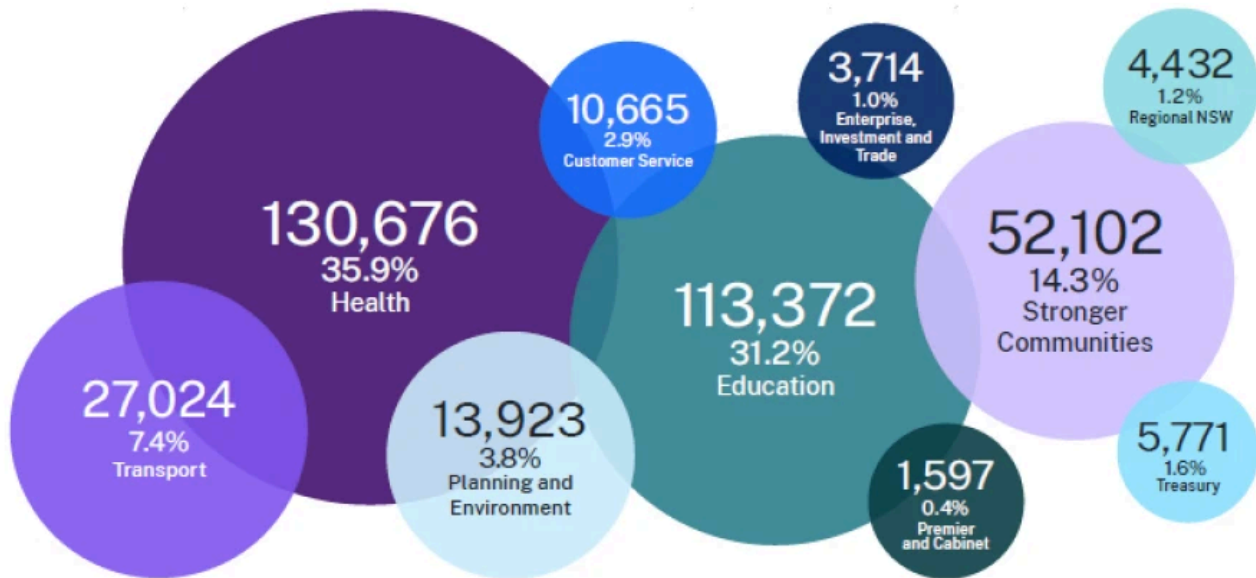
Examples of other Crown services include the TAFE Commission, School Administrative and Support Staff, and Sydney Trains.

* Under the GSE Act, State owned corporations are included in the government sector for certain specified purposes. In this report, they are treated as part of the public sector but not the government sector.

** The PSC does not collect data on these employees.

Under the GSE Act, NSW universities are part of the government sector for certain specified purposes. The PSC does not collect data on the employees of NSW universities. They are not considered part of the public sector or government sector in this report.

Full-time equivalent employees by cluster



Full-time equivalent employees by cluster



| Cluster | FTE | % |
|----------------------------------|---------|------|
| Health | 130,676 | 35.9 |
| Education | 113,372 | 31.2 |
| Stronger Communities | 52,102 | 14.3 |
| Transport | 27,024 | 7.4 |
| Planning and Environment | 13,923 | 3.8 |
| Customer Service | 10,665 | 2.9 |
| Regional NSW | 4,432 | 1.2 |
| Enterprise, Investment and Trade | 3,714 | 1.0 |
| Premier and Cabinet | 1,597 | 0.4 |
| Treasury | 5,771 | 1.6 |

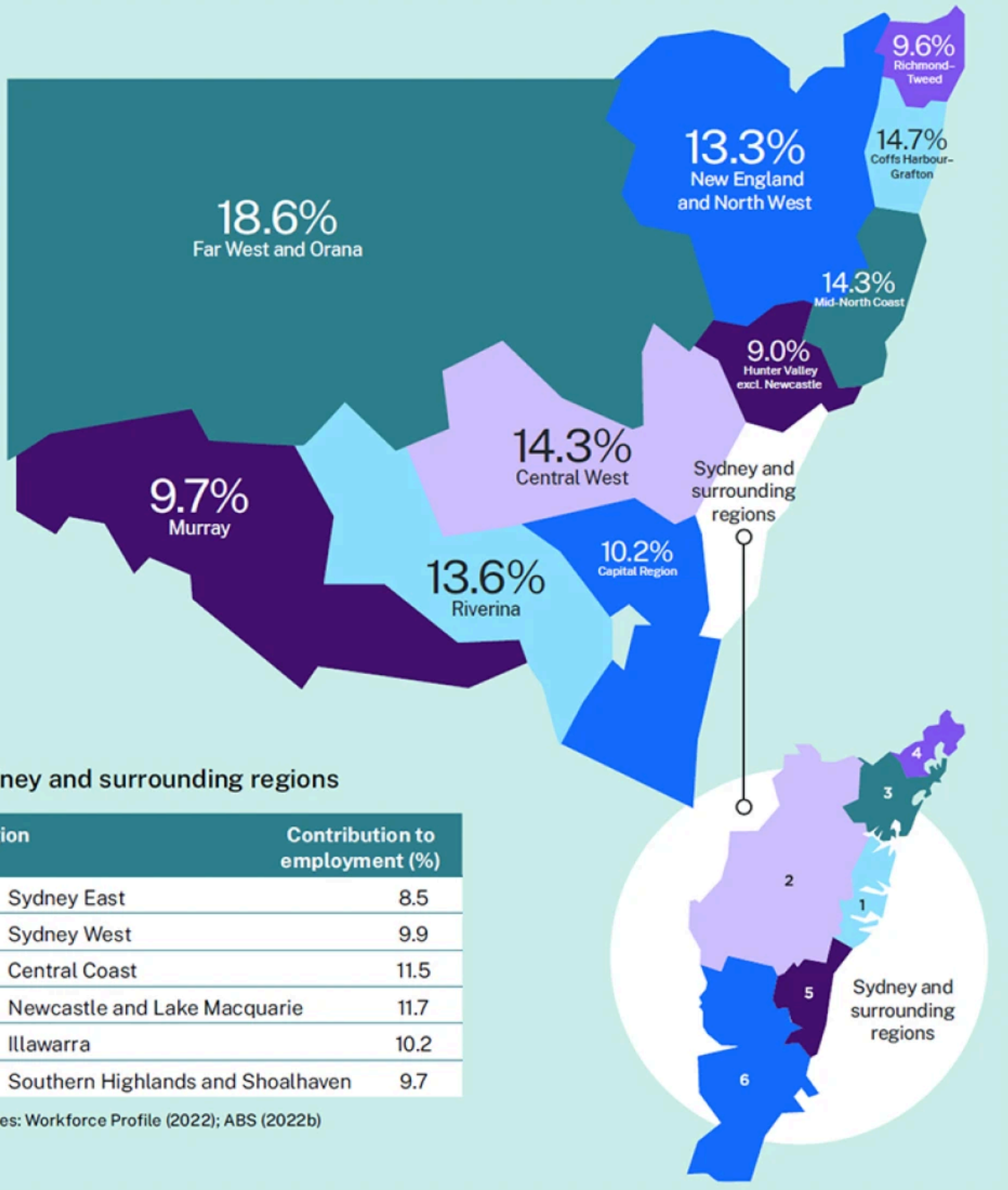
Source: WFP (2022), census period

Note: Percentages indicate the contribution of the cluster’s FTE to the public sector’s total FTE.

Headcount and contribution to overall employment by NSW region

The NSW Government is a significant employer in every part of the state. Most public sector employees work in Sydney (59.1%). However, the sector contributes relatively more to overall employment in regional areas of NSW than it does to employment in Sydney.

In 2022, 65.7% of public sector employees worked in a metropolitan area (Sydney, Newcastle and Wollongong), compared with 34.3% in regional NSW. Additionally, 65.4% of the NSW Estimated Resident Population are in the metropolitan area, compared with 34.6% in regional NSW.



Headcount and contribution to overall employment: text version of diagram



Greater NSW

| Region | Contribution to employment (%) |
|-------------------------------|--------------------------------|
| Hunter Valley excl. Newcastle | 9.0 |
| Mid-North Coast | 14.3 |
| New England and North West | 13.3 |
| Far West and Orana | 18.6 |
| Coffs Harbour – Grafton | 14.7 |
| Richmond – Tweed | 9.6 |
| Capital Region | 10.2 |
| Riverina | 13.6 |
| Murray | 9.7 |
| Central West | 14.3 |

Sydney region

| Region | Contribution to employment (%) |
|-----------------------------------|--------------------------------|
| Sydney East | 8.5 |
| Sydney West | 9.9 |
| Central Coast | 11.5 |
| Newcastle and Lake Macquarie | 11.7 |
| Illawarra | 10.2 |
| Southern Highlands and Shoalhaven | 9.7 |

Sources: Workforce Profile (2022); ABS (2022b)

Occupations

The NSW public sector employs people in a wide range of occupations.



69,830 School Teachers

down from 70,270 in 2021



51,880 Nurses

up from 51,441 in 2021



17,033 Police Officers

down from 17,174 in 2021



48,701 Clerical and Administrative Workers

up from 47,406 in 2021



26,261 School Support Staff

up from 25,802 in 2021



13,674 Medical Practitioners

up from 13,190 in 2021



7,834 Social and Welfare Professionals

down from 7,886 in 2021



5,151 Cleaners and Laundry Workers

down from 5,220 in 2021



5,164 Ambulance Officers

up from 4,745 in 2021



4,246 Labourers

down from 4,605 in 2021



3,967 Prison Officers

down from 4,297 in 2021



4,252 Firefighters

up from 4,157 in 2021



59 Bus Drivers

down from 2,665 in 2021



2,217 Train Drivers

up from 2,074 in 2021



1,983 Food Preparation Assistants

down from 1,988

Source: Workforce Profile (2021, 2022), census period

Note: Teacher staffing allocations are predominantly driven by student enrolments. In 2022 the student enrolment in NSW Public Schools decreased, resulting in a corresponding decrease in teaching FTE. Student to staff ratios remain steady. The decline in Police Officers was due to a higher number of separations, including medical retirements, and lower number of commencements. While the FTE number of Prison Officers declined, the headcount increased. The decline in bus drivers is due to the movement of service delivery outside of the public sector.

Employment types

The type of employment that the NSW public sector offers varies to ensure the sector can flexibly deliver services; however, most people are employed on an ongoing basis. There has been stabilisation across all employment types over the past two years. The wide variety of roles within the NSW public sector means that our people are employed across a wide remuneration range.

Source: Workforce Profile (2013–22), census period

Note: The 'Other' category includes employees whose employment category is Contract Executive, Contract Non-Executive, Statutory Appointee, Transport Senior Manager or Other.

Source: Workforce Profile (2013, 2018, 2022), census period, non-casual only

Note: To provide a whole-of-sector perspective, remuneration has been aligned with the non-executive grades defined in the Crown Employees (Administrative and Clerical Officers – Salaries) Award 2022. The GSE Act provides for the Premier to determine the bands in which bands senior executives are employed. Currently, there are four bands.

Next section: our people

Who we are and how we feel at work.

